

Accommodation



Boutique and Lodge

Ebb-Dunedin

Ebb-Dunedin is a 28-room architecturally designed boutique accommodation in the heart of the city. This adult only hotel is an oasis of calm with atrium lounges on every level where people can meet and catch up. With forward-thinking design, the three-storey façade boasts a large scape artwork by a local artist that depicts Polynesian wakas first arriving through the heads of Otago Harbour.



Number of Rooms

28

Contact Details

👤 Stephanie Piner
📍 82 Filleul Street, Dunedin Central, Dunedin
☎ +64 (0) 3 260 6800
✉ hotelmanager@ebb-dunedin.co.nz
🌐 ebb-dunedin.co.nz

The Longhouse

An oasis on the outskirts of Dunedin, The Longhouse is a bright, welcoming getaway in Karitāne. This historic house overlooking the Otago coastline was made for recovery and was built about 100 years ago as a retreat for shell-shocked WW1 soldiers. Tailor-make your own bespoke wellness experience or just curl up on the sofa with your friends and enjoy the views.

- Exclusive use.



Number of Rooms

6

Contact Details

👤 Ilse Erasmus
📍 1140 Coast Road, Karitane 9471
☎ +64 21 352 890
✉ ilse@thelonghouse.co.nz
🌐 <https://tirimoanawhareroa.com/>

Boutique and Lodge

Larnach Lodge

Larnach Lodge accommodation is purpose built within the grounds of Larnach Castle. The twelve themed rooms encapsulate the historic Larnach Castle setting. Set within 35 acres of gardens and grounds, perfect for evening strolls and walks and guests can enjoy dinner in the castle.



Number of Rooms

12

Contact Details

👤 Jo Van der Linden
📍 145 Camp Road, Otago Peninsula
☎ +64 (0) 3 476 1616
✉ jo@larnachcastle.co.nz
🌐 www.larnachcastle.co.nz

Camp Estate

Camp Estate is a glamorous country house situated 500 metres from the Larnach Castle gate. The five spacious bedrooms are luxuriously decorated, with particular attention being paid to guest comfort. Particularly lovely features of these rooms are the fireplaces and uninterrupted views of the surrounding countryside and the Otago Peninsula. Guests are invited to dine in the castle in the evenings.



Number of Rooms

5

Contact Details

👤 Jo Van der Linden
📍 100 Camp Road, Otago Peninsula
☎ +64 (0) 3 476 1616
✉ jo@larnachcastle.co.nz
🌐 www.campestate.co.nz

Apartments

Bell Hill Apartments

A small offering, these are 3 stunning apartments in a redeveloped heritage building with full amenities right in the heart of the city. Each apartment can accommodate up to four people. Off-street parking available with a minimum 2-night stay. A great option for FITs wanting to be based in the centre of town.

- Apartments. Heart of the city. Heritage.
- FIT



Number of Rooms

3

Contact Details

👤 Dan Gin
📍 462 Moray Place, Central Dunedin, Dunedin 9016
☎ +64 21 352 994
✉ welcome@bellhillapartments.co.nz
🌐 www.bellhillapartments.co.nz

Majestic Mansions

Majestic Mansions is a grand, 1919 heritage-listed building, featuring art deco accents that gives a completely unique experience. Each apartment has been recently renovated to give guests a relaxed, chilled-out, beach house vibe.

- St Clair Beachside. Sea views. walking distance to restaurants/cafes.
- FIT and groups



Number of Rooms

28

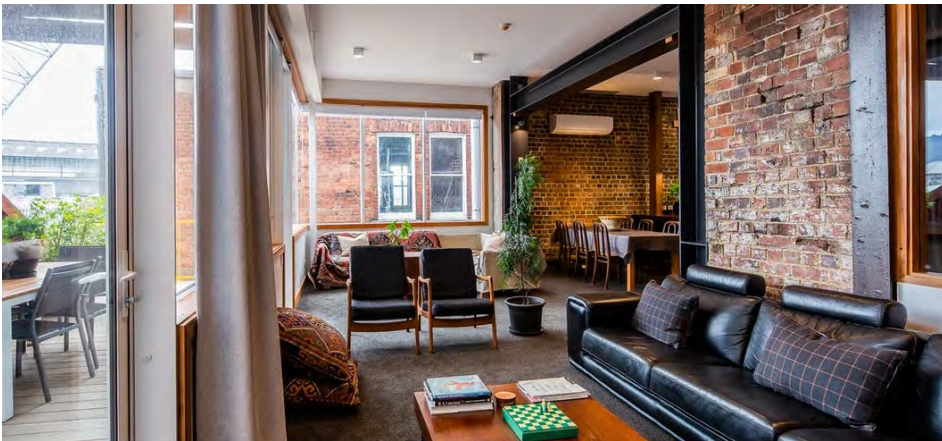
Contact Details

👤 Penny Riley
📍 15 Bedford Street, St Clair, Dunedin 9012
☎ +64 3 456 5000
✉ bookings@majesticmansions.co.nz
🌐 <https://majesticmansions.co.nz>

Apartments

Thomas Gregg Apartments

A collection of 2-bedroom waterfront boutique apartments which include bespoke kitchens, luxurious beds, amazing bathrooms and generous living spaces that are both comfortable and beautifully appointed. Built in 1878 by coffee merchant and entrepreneur Thomas Gregg, the lobby features an antique coffee roaster. The entire building from the stairs and fixtures has been revived with its heritage and reuse of materials in mind.



Number of Rooms

4

Contact Details

👤 Jo Deuchrass
📍 21 Fryall Street, Dunedin
☎ +64 27 486 1185
✉ jo@lunds.co.nz
🌐 <https://www.thethomasgregg.co.nz/>



Bed and Breakfasts

Hereweka Garden Retreat

An architecturally eco-designed boutique accommodation, built with sustainable materials, this secluded retreat property has the only remaining valley of native forest on the Otago Peninsula and has breath-taking views. Just a 30 minutes' drive from Dunedin central city, the lodge is situated on the slopes of the iconic Harbour Cone, far from the noise of traffic and close to many attractions on the Otago Peninsula.

- Otago Peninsula. Eco-stay with organic breakfast. Sole occupancy.
- FIT



Number of Rooms

1

Contact Details

- Anna Moore
- 10 Hoopers Inlet Road, Portobello, Dunedin 9077
- +64 3 478 0165
- stay@hereweka.co.nz
- www.hereweka.co.nz

Captain Eady's Lookout

A delightful bed and breakfast situated on the water's edge at Portobello on the Otago Peninsula, a 30 min drive from Dunedin. Homestay in large character house, beautiful waterside location with secluded garden and superb harbour views. Have a special breakfast in the conservatory and enjoy their antiques, jazz records and local artwork.

- Otago Peninsula. bed & breakfast. secluded gardens.
- FIT



Number of Rooms

2

Contact Details

- Anna Good
- 2 Moss Street, Portobello, Dunedin 9014
- +64 3 478 0537 | Mobile: +64 21 478 78
- Ana.good70@gmail.com
- capteady.co.nz

Bed and Breakfasts

McAuley Glen Boutique

Located in the heart of the magnificent Otago Peninsula. A private, tranquil harbourside setting of beautiful gardens. Five-minute stroll to the restaurants, bar and café at Portobello. Close to ocean beaches, albatross, penguin & seal colonies.

- Otago Peninsula. Township of Portobello. Walking distance to cafes.
- FIT



Number of Rooms

3

Contact Details

👤 Mary and Pat Curtain
📍 13 McAuley Road, Portobello, Dunedin 9014
📞 +64 3 478 0724 | Mobile: + 64 21 237 1919
✉️ stay@mcauleyglen.co.nz
🌐 www.mcauleyglen.co.nz

Hunters Moon

Situated just 20 minutes' drive from central Dunedin city, Hunters Moon offers stunning views over the Taieri Plain. Guests can relax in the garden, collect eggs from the free-range chickens or hand feed the sheep and alpaca. The shops, cafés and restaurants of Mosgiel town centre are a short drive away. Most rooms including The King Rooms and Luxury King Room offer panoramic views of the countryside. Tea/coffee making facilities are provided along with complimentary toiletries. Laundry facilities and transport to the airport are available at an additional charge.



Number of Rooms

9

Contact Details

📍 16 Friends Hill Road, Mosgiel 9092, Dunedin,
📞 +64 (0) 3 489 2942
✉️ huntersmoon@xtra.co.nz
🌐 <https://huntersmoon.co.nz/>

Bed and Breakfasts

Fantail Lodge

Fantail Lodge is self-contained accommodation located in Broad Bay on the Otago Peninsula. It features two environmentally-friendly cottages that are great for couples and can also accommodate small families. Situated right near the Otago Harbour, the lodge is a short drive from the city centre and is near multiple walking tracks, beaches, bays and islands which can be explored. The Bellbird Cottage includes the added luxury of a private outdoor hot tub.



Number of Rooms

6

Contact Details

👤 Tessa and Vic Mills
📍 682 Portobello Road, Broad Bay, Dunedin 9014
📞 +64 3 478 0110 Mobile: + 64 27 415 6222 (Vic)
✉️ info@fantail-lodge.co.nz
🌐 www.fantail-lodge.co.nz

Kanuka

Perched on the cliff above the scenic Otago Harbour, Kanuka Cottage offers a getaway in a peaceful, relaxing setting with uninterrupted views and a private garden. Couples traveling together or a family group will enjoy the spacious living area and three separate bedrooms spread over two floors.



Number of Rooms

6

Contact Details

👤 Alison and David
📍 21 Oxley Crecent, Broad Bay, Dunedin 9014
📞 +64 27 261 4142 Mobile | +64 (0) 3 478 0788
✉️ kanukacottage@xtra.co.nz
🌐 www.kanukacottage.co.nz

Hotels



Hotels

Distinction Dunedin Hotel

Located in the rejuvenated and vibrant Warehouse Precinct in the heart of the city, the 4 star plus Distinction Dunedin Hotel boasts great venues to meet, drink and dine. The Exchange Conference Room offers natural daylight and glass sliding door panels, which can create separate spaces within the room.

Distinction Hotels are 100% New Zealand owned and operated, so our manner is down-to-earth and completely focused on your needs.

Room breakdown

Studio	67
Studio Twin	10
One Bedroom Suite	21
Executive Studio	10
Family Suite	10
Two Bedroom Suite	4
Four Bedroom Suite	1

Hotel Star Rating

★★★★+

Number of Rooms

123

Maximum Capacity

270

Highlights

- Dine in the original vaults of Dunedin's former Chief Post Office
- Triple glazed windows and double gib lined walls for ultimate soundproofing

Contact Details

- 👤 Steven Emery
- 📍 Corner Bond Street and Liverpool Street, Dunedin
- ☎ +64 27 281 2835
- ✉ steven.emery@distinctionhotels.co.nz
- 🌐 www.distinctionhotelsdunedin.co.nz



Hotels

Distinction Dunedin Leisure Lodge

Dunedin Leisure Lodge is nestled within two acres of beautifully kept gardens and flowing lawns. Neighbouring the stunning Dunedin Botanic Garden, this tranquil oasis is just 6 minutes' drive from the city centre and a short stroll to the Otago Museum and the University of Otago. Forsyth Barr Stadium is also within easy walking distance. The iconic Dunedin hotel's unique surroundings make for a truly relaxing place to stay.

The Qualmark four-star-rated hotel offers 75 hotel rooms all with double glazed windows for enhanced soundproofing, heaters, refrigerators, tea and coffee making facilities, flat screen TVs with SKY channels and free unlimited Wi-Fi. The Superior Hotel Rooms also offer a patio or balcony facing the flowing lawns and landscaped gardens. Guests can enjoy complimentary car parking and dining at the popular McGavins Restaurant and Bar.

Room breakdown

Standard Twin	22
Standard Family	4
Standard King	10
Superior Twin	17
Superior Queen	9
Superior King	12
Superior Suite	1

Hotel Star Rating

★★★★

Number of Rooms

75

Maximum Capacity

245

Highlights

- Located close to the University of Otago & Otago Polytechnic
- Complimentary parking
- Two acres of beautiful gardens

Contact Details

- 👤 Steven Emery
- 📍 30 Duke Street
- ☎ +64 27 281 2835
- ✉ steven.emery@distinctionhotels.co.nz
- 🌐 www.dunedinleisurelodge.nz



Hotels

Fable Dunedin

As Dunedin's only Qualmark 5-star hotel, the multi-award-winning Fable Dunedin features 50 plush rooms, including two incredible suites, bespoke dining experiences and impressive event spaces, all with world-class guest service and attention to detail to make every stay truly memorable.

The Press Club is Fable Dunedin's signature bar and restaurant, in appreciation of Dunedin's original haunt for editors and publishers in the 1870's. Create your own dining experience from a locally-sourced menu prepared right before your eyes or relax with a unique in-room dining service. The extensive whisky menu is a highlight at The Press Club, with simple tipples and elaborate cocktails.

Room breakdown

Classic Queen	18
Superior King/Queen	24
Luxury Room	3
Junior Suite	3
Mason Suite	1
Wains Suite	1

Hotel Star Rating

★★★★★

Number of Rooms

50

Maximum Capacity

103

Highlights

- Available for exclusive use
- Dunedin's only 5* Qualmark hotel

Contact Details

👤 Lisa Breckon
📍 310 Princes St, Dunedin, 9016
☎ +64 22 542 5622
✉ lisa.breckon@cpghotels.com
🌐 www.cpg-hotels.com



Hotels

Kingsgate Hotel

The Kingsgate Hotel has 54 north facing and sun-soaked accommodation rooms all with balconies. The hotel overlooks the Dunedin Centre and Town Hall and is the closest accommodation to the Octagon where guests can enjoy an abundance of bars and restaurants.

Room breakdown	
Standard rooms	45
Junior suites	9

Hotel Star Rating	Number of Rooms	Maximum Capacity
★★★★+	54	220

Highlights

- 1-minute walk to the Octagon
- 9 junior suites
- All bedrooms have balconies

Contact Details

- 👤 Todd Mears
- 📍 10 Smith Street, Dunedin 9016
- ☎ +64 (0)3 477 6784
- ✉ todd.mears@millenniumhotels.com
- 🌐 www.millenniumhotels.com/en/dunedin/kingsgate-hotel-dunedin/



Hotels

Scenic Hotel Dunedin City

Stay in the heart of Dunedin at this stylish, award-winning hotel. Relax in one of the well appointed and most spacious guest rooms in the city or enjoy the premium comfort of an executive suite, complete with private balcony overlooking the harbour.

The Scenic Hotel Dunedin City is located just minutes from the Octagon and guests can relax and enjoy the cosy lounge bar with a fireplace.

Room breakdown

Rooms	110
Suites	11

Hotel Star Rating

★★★★+

Number of Rooms

121

Maximum Capacity

365

Highlights

- 3-minute walk to the Octagon
- Lounge Bar with fireplace
- Some of the most spacious bedrooms in the city, starting at 31sqm

Contact Details

- 👤 Steve Shearer
- 📍 Cnr Princes and Dowling Streets, Dunedin 9054
- ☎ +64 27 458 8235
- ✉ steves@scenichotels.co.nz
- 🌐 www.scenichotelgroup.co.nz



Hotels

Scenic Hotel Southern Cross

The 178-room Scenic Hotel Southern Cross proudly stands in the heart of the Dunedin city. As Dunedin's largest and most established hotel, with nine function rooms, the hotel is large enough to cater for sizeable business groups, events, and conferences, yet personal enough to care about the little details and individualised service that will make your stay memorable.

Whether it be a small business meeting or a conference for 180 guests, they can tailor make your special event with professionalism and flair. Our extensive conference facilities include the larger Heritage and Cargill Rooms on the ground floor as well as further meeting spaces the fourth floor in their dedicated conference centre.

Room breakdown

Standard	60
Superior	110
Suites	8

Hotel Star Rating

★★★★+

Number of Rooms

178

Maximum Capacity

550

Highlights

- The largest hotel with some of the most spacious rooms
- 5-minute walk to the Octagon

Contact Details

- 👤 Steve Shearer
- 📍 Cnr Princes and High Streets, Dunedin 9054
- 📞 +64 27 458 8235
- ✉️ steves@scenichotels.co.nz
- 🌐 www.scenichotelgroup.co.nz



Hotels

Victoria Hotel

Nestled in the heart of the city, the Victoria Hotel is only 5 minutes' walk from Dunedin's business hub and the shopping malls. Making for the ideal stay whether visiting for both business or leisure.

The Victoria Hotel takes pride in the level of service offered and dedication for going the extra mile for guests. The reception desk is open 24/7.

Room breakdown

Main block:	42 rooms
Deluxe Kitchen Studio	2
Standard rooms	19
Two Bedroom Suite	1
Deluxe rooms	13
Deluxe King rooms	5
Deluxe Two Bedroom	1
Two Bedroom apartment	1
New wing	30 rooms
Superior King rooms	15
Superior Twin rooms	9
Superior Kitchen Studios	4
Executive Suite	1
Superior Two Bedroom Suite	1

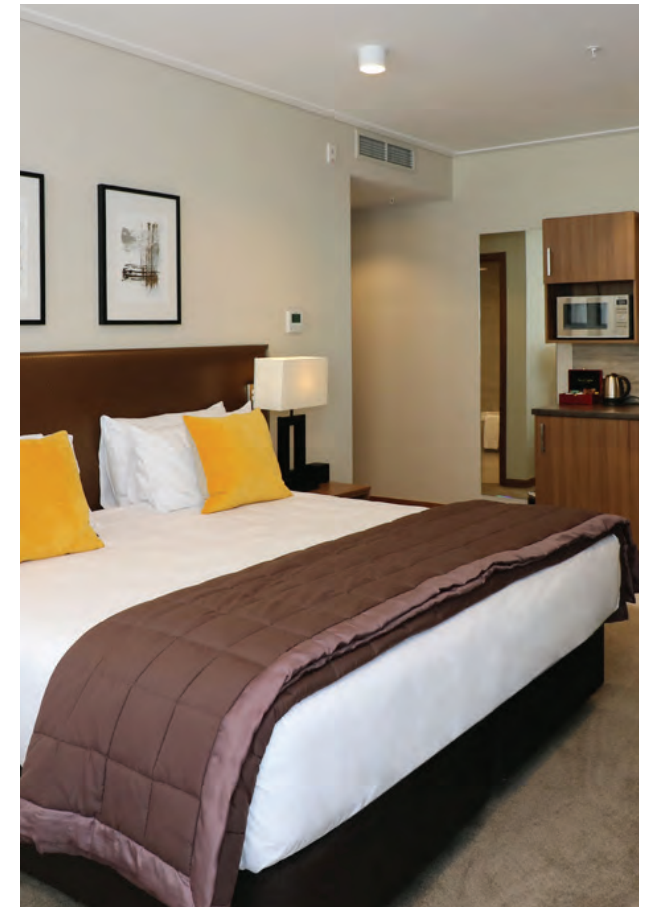
Hotel Star Rating	Number of Rooms	Maximum Capacity
★★★★	72	240

Highlights

- Locally owned and operated
- Modern superior rooms with soundproof interior and air-conditioning
- 5-minute walk to the Octagon, George St and Dunedin Hospital

Contact Details

👤 Leo Pan
📍 137 St Andrew Street, Dunedin, 9016
☎ +64 (0) 3 477 0572
✉ reservations@victoriahoteldunedin.com
🌐 www.victoriahoteldunedin.com



Motels

Dunedin has a great range of motel options. City centre motels that are Qualmarked are listed below, for more details on a wider range of motels visit <https://www.dunedinnz.com/visit/accommodation>.

Motel Name	Qualmark	No. of Rooms	Contact Details	Phone Number	Website
538 Great King	4 star	20	stay@greatkingmotel.co.nz	03 477 7983	www.greatkingmotel.co.nz
858 George Street Motel	4 star plus	13	reservations@858georgestreetmotel.co.nz	03 474 0047	www.858georgestreetmotel.co.nz
Alcala Motel	3 star	23	bookings@alcalamotorlodge.co.nz	03 477 9073	www.alcalamotorlodge.co.nz
Allan Court Motel	4 star plus	18	stay@allancourt.co.nz	03 477 7526	www.allancourt.co.nz/
Amross Motel	4 star	15	amrossmotel@callplus.net.nz	03 471 8924	www.amrossmotel.co.nz
Aurora On George	4 star plus	26	stay@auroradunedin.co.nz	03 477 7984	www.auroradunedin.co.nz
Bella Vista Motel Dunedin	4 star	16	dunedin@bellavista.co.nz	03 477 2232	www.bellavista.co.nz/
Cable Court Motel	4 star	30	info@cablecourtmotel.co.nz	03 477 3525	www.cablecourtmotel.co.nz
Dunedin Motel and Villas	4 star plus	20	staydunedin@xtra.co.nz	03 477 7692	www.dunedinmotels.co.nz/
Motel On York	4 star	23	info@motelonyork.co.nz	03 477 6120	www.motelonyork.co.nz